

Festoon Systems for I-Beams

Program 0314 | 0320 | 0325 | 0330



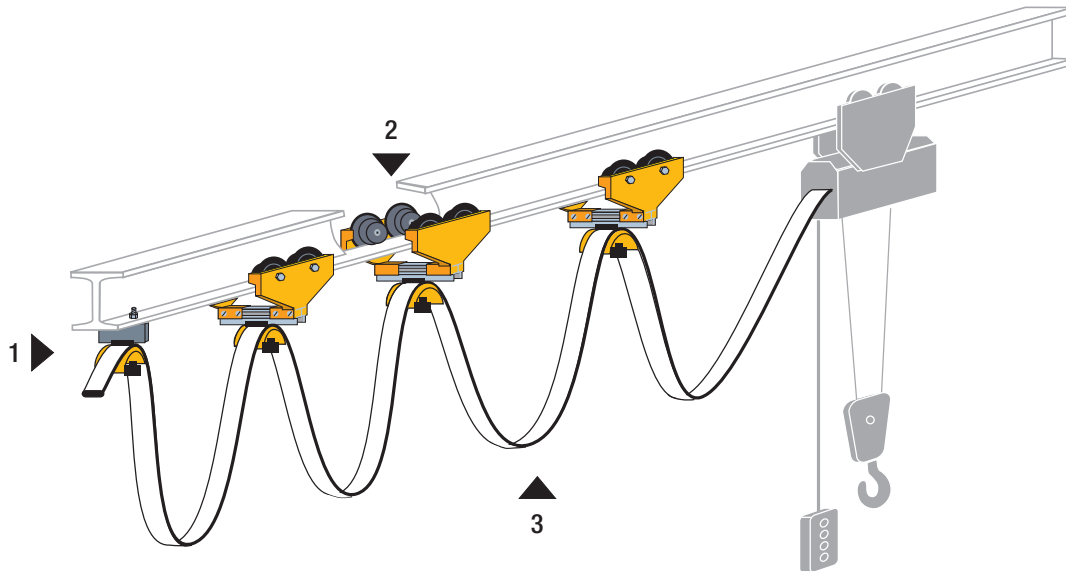
CONDUCTIX
wampfler

Contents

Cable Trolleys for Flat Cables – Program 0314	4
Festoon System for Flat Cables.....	4
4 Wheel Plastic Trolley.....	4
3 Wheel Plastic Trolley.....	5
2 Wheel Plastic Trolley.....	5
End Clamp.....	5
Cable Trolleys for Round Cables – Program 0314	6
Festoon System for Round Cables.....	6
4 Wheel Plastic Trolley with Ball Joint Attachment.....	6
3 Wheel Plastic Trolley with Ball Joint Attachment.....	7
2 Wheel Plastic Trolley with Ball Joint Attachment.....	7
Cable Clip.....	8
End Clamp.....	8
2 Wheel Plastic Trolley with Hook Attachment.....	9
Cable Collar.....	9
System Arrangement – Program 0320, 0325 and 0330	10
Festoon System for Flat and Round Cables.....	10
Design Features.....	10
Ordering Example Program 0320.....	10
Cable Trolleys – Program 0320	11
Steel Trolleys for Flat Cables.....	11
Steel Trolleys for Round Cables.....	12
Cable Trolleys – Program 0325	13
Steel Trolleys for Flat Cables.....	13
Steel Trolleys for Round Cables.....	14
Cable Trolleys – Program 0330	15
Steel Trolleys for Flat Cables.....	15
Steel Trolleys for Round Cables.....	16
Accessories for Festoon Systems – Program 0320, 0325 and 0330	17
Tow Ropes.....	17
Damping Devices.....	17
Round Cable Clamps.....	18
Spacers.....	18
Flat Cable Clamps.....	19
Wear Parts for Cable Trolleys – Program 0320, 0325 and 0330	20
Replacement Rollers for Program 0320.....	20
Replacement Rollers for Program 0325.....	20
Replacement Rollers for Program 0330.....	20
Replacement Anti-Lift Roller for Program 0320, 0325 and 0330.....	21
Damping Ropes for Program 0325 and 0330.....	21

Cable Trolleys for Flat Cables Program 0314

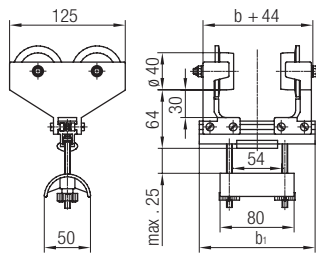
Festoon System for Flat Cables



- 1. End Clamp
- 2. Cable Trolleys
- 3. Flat Cable

Material Cable Trolleys for Flat Cables	
Side Shield:	Plastic
Roller:	Nylon, Friction Bearing
Shaft:	Stainless Steel
Support Rail:	Aluminum
Cable Support:	Plastic
Clamping Piece:	Rubber
Fasteners:	Galvanized Steel
Split Nut:	Plastic

4 Wheel Plastic Trolley



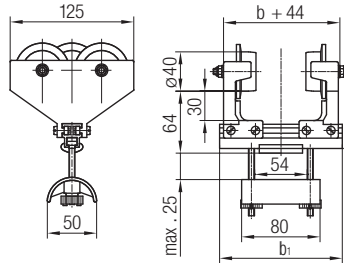
Application

The trolleys 022134 are designed for use with flat cables. They have a maximum cable package window opening of 54 mm width by 25 mm height.

Part No.	Acid Resistant Part No.	b_1 [mm]	Max. Flange Width b [mm]	Max. Travel Speed	Max. Load Capacity
022134-125	---	125	81	50 m/min (165 FPM)	20 kg (45 lbs)
022134-160	022434-160	160	116		
022134-200	022434-200	200	156		
022134-250	---	250	206		
022134-280	---	280	236		
022134-320	---	320	276		
022134-350	---	350	306		

Cable Trolleys for Flat Cables Program 0314

3 Wheel Plastic Trolley

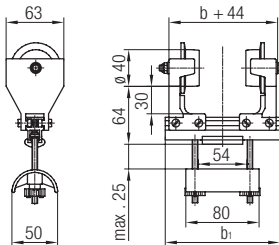


Application

The trolleys 022133 are designed for use with flat cables. They have a maximum cable package window opening of 54 mm width by 25 mm height.

Part No.	Acid Resistant Part No.	b ₁ [mm]	Max. Flange Width b [mm]	Max. Travel Speed	Max. Load Capacity
022133-125	---	125	81	50 m/min (165 FPM)	10 kg (22 lbs)
022133-160	022433-160	160	116		
022133-200	022433-200	200	156		
022133-250	---	250	206		
022133-280	---	280	236		
022133-320	---	320	276		

2 Wheel Plastic Trolley

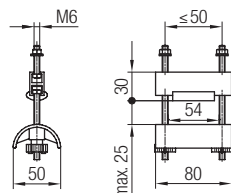


Application

The trolleys 022132 are designed for use with flat cables. They have a maximum cable package window opening of 54 mm width by 25 mm height.

Part No.	Acid Resistant Part No.	b ₁ [mm]	Max. Flange Width b [mm]	Max. Travel Speed	Max. Load Capacity
022132-125	---	125	81	50 m/min (165 FPM)	10 kg (22 lbs)
022132-160	022432-160	160	116		
022132-200	022432-200	200	156		
022132-250	---	250	206		
022132-280	---	280	236		
022132-320	---	320	276		

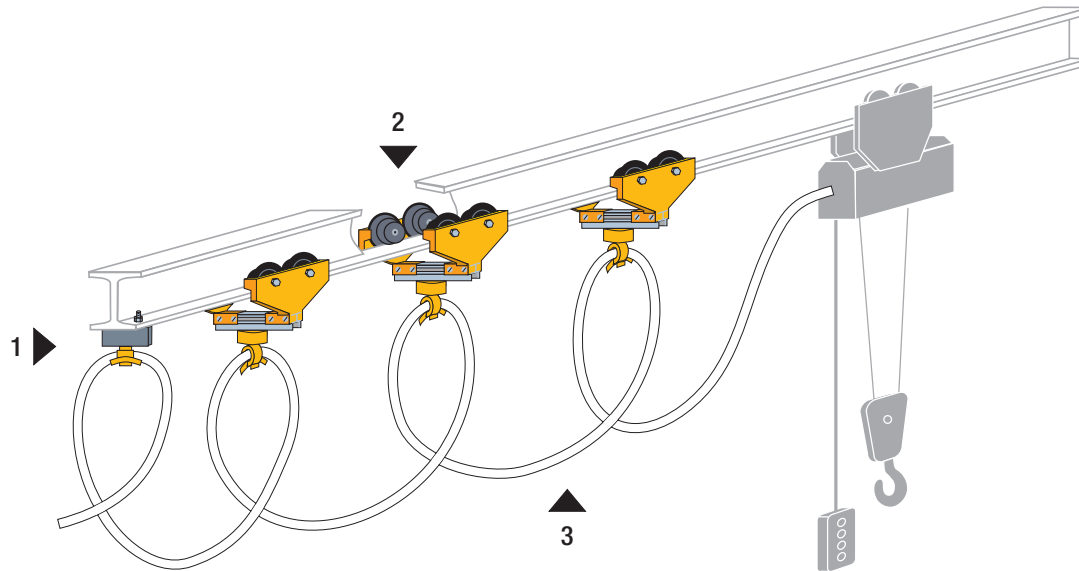
End Clamp



Part No.	Acid Resistant Part No.
020221-080	020421

Cable Trolleys for Round Cables Program 0314

Festoon System for Round Cables

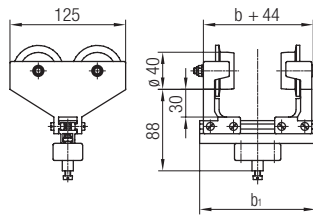


- 1. End Clamp
- 2. Cable Trolleys
- 3. Round Cable

Material Cable Trolleys for Round Cables

Side Shield:	Plastic
Roller:	Nylon, Friction Bearing
Shaft:	Stainless Steel
Support Rail:	Aluminum
Ball Joint Housing:	Plastic
Clamping Piece:	Rubber
Fasteners:	Galvanized Steel

4 Wheel Plastic Trolley with Ball Joint Attachment



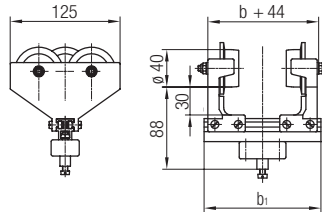
Application

Trolleys with ball joint are designed for use with round cables or hoses. Cable clip type 020131 for supporting cables or hoses must be ordered separately.

Part No.	Acid Resistant Part No.	b_1 [mm]	Max. Flange Width b [mm]	Max. Travel Speed	Max. Load Capacity
022124-125	---	125	81	50 m/min (165 FPM)	20 kg (45 lbs)
022124-160	022424-160	160	116		
022124-200	022424-200	200	156		
022124-250	---	250	206		

Cable Trolleys for Round Cables Program 0314

3 Wheel Plastic Trolley with Ball Joint Attachment

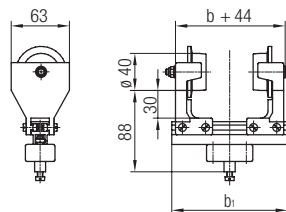


Application

Trolleys with ball joint are designed for use with round cables or hoses. Cable clip type 020131 for supporting cables or hoses must be ordered separately.

Part No.	Acid Resistant Part No.	b_1 [mm]	Max. Flange Width b [mm]	Max. Travel Speed	Max. Load Capacity
022123-125	---	125	81	50 m/min (165 FPM)	10 kg (22 lbs)
022123-160	022423-160	160	116		
022123-200	022423-200	200	156		
022123-250	---	250	206		

2 Wheel Plastic Trolley with Ball Joint Attachment



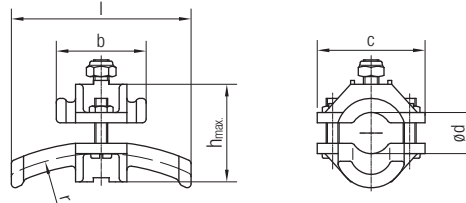
Application

Trolleys with ball joint are designed for use with round cables or hoses. Cable clip type 020131 for supporting cables or hoses must be ordered separately.

Part No.	Acid Resistant Part No.	b_1 [mm]	Max. Flange Width b [mm]	Max. Travel Speed	Max. Load Capacity
022122-125	---	125	81	50 m/min (165 FPM)	10 kg (22 lbs)
022122-160	022422-160	160	116		
022122-200	022422-200	200	156		
022122-250	---	250	206		

Cable Trolleys for Round Cables Program 0314

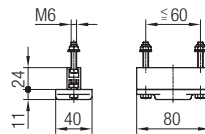
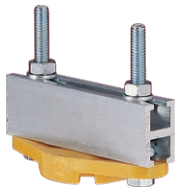
Cable Clip



It is possible to fit multiple cable clips onto a trolley. When fitting different sized cable clips, the largest cable clip must be fitted on top.

Part No.	Acid Resistant Part No.	ød [mm]	r [mm]	l [mm]	h [mm]	b [mm]	c [mm]	Material Cable Clip
020131-16	020431-16	10 - 16	80	70	38	35	42	Plastic
020131-25	020431-25	17 - 25	125	100	47	50	50	
020131-36	020431-36	26 - 36	180	140	58	70	64	

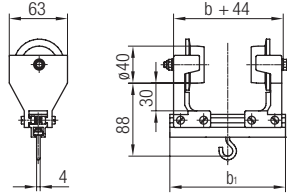
End Clamp



Part No.	Acid Resistant Part No.
020214-080	020414-080

Cable Trolleys for Round Cables Program 0314

2 Wheel Plastic Trolley with Hook Attachment

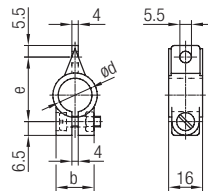


Application

Trolleys with hook are designed for use with cable collars for round cables or hoses. Cable collar type 020111 for cables or hoses must be ordered separately.

Part No.	b_1 [mm]	Max. Flange Width b [mm]	Max. Travel Speed	Max. Load Capacity
022112-125	125	81	50 m/min (165 FPM)	10 kg (22 lbs)
022112-160	160	116		
022112-200	200	156		

Cable Collar

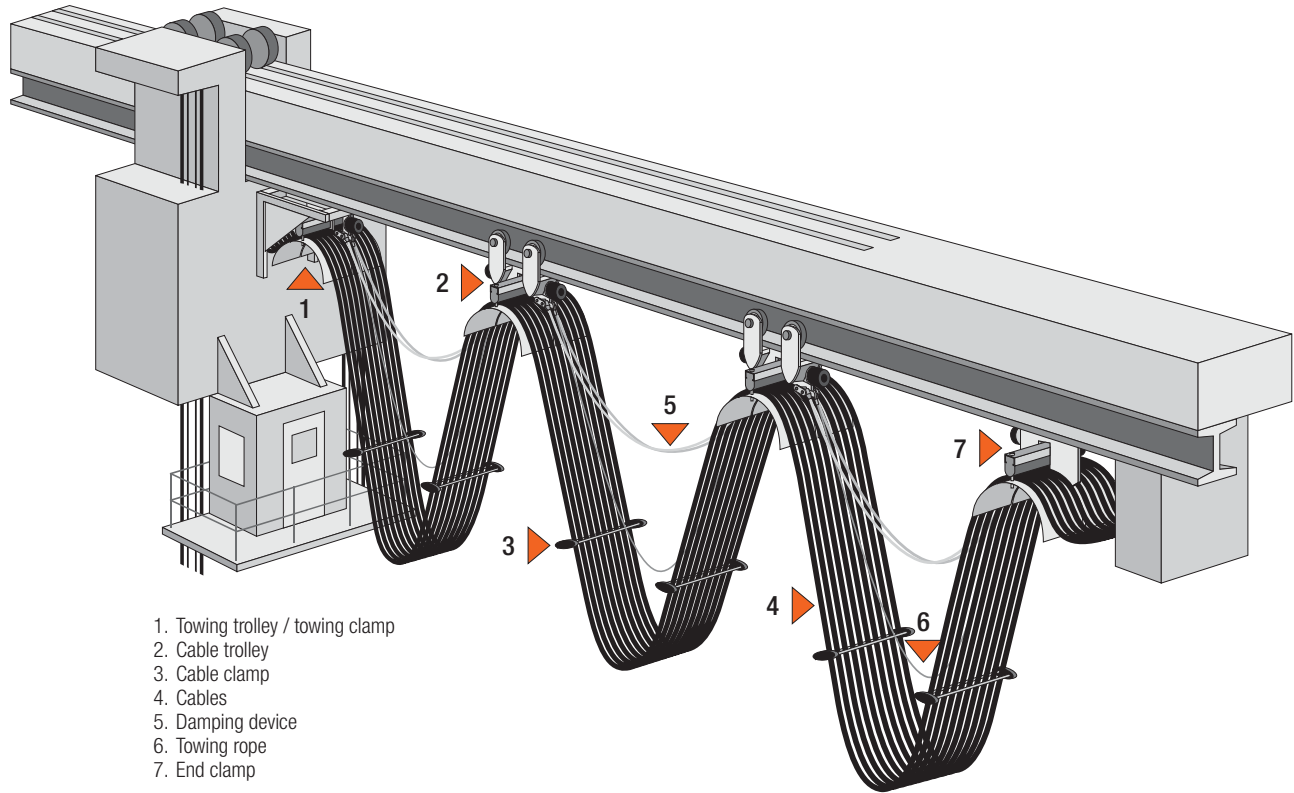


Cable collars for cables or hoses will attach to the hook on the trolley (Part No. 022112). It is possible to fit multiple cable collars onto a trolley. When stacking multiple cable collars, the largest cable collar must be fitted on top.

Part No.	$\varnothing d$ [mm]	b [mm]	e [mm]	Material	
				Cable Collar	Fasteners
020111-08	8	18	23.0	Plastic	Galvanized Steel
020111-10	10		24.5		
020111-11	11		25.5		
020111-12,5	12,5		27.5		
020111-14	14		28.5		
020111-16	16		30.5		
020111-18	18	32.5	23		
020111-20	20	34.5			
020111-22	22	36.5			
020111-25	25	39.5			
020111-28	28	42.5			
020111-32	32	46.5			
020111-36	36	50.5			

System Arrangement

Festoon System for Flat and Round Cables



1. Towing trolley / towing clamp
2. Cable trolley
3. Cable clamp
4. Cables
5. Damping device
6. Towing rope
7. End clamp

Design Features

- Base trolley and cable supports: galvanized steel
- Fasteners: galvanized steel
- Running gear spacers are made of aluminum
- Clamping Piece: rubber
- Flange guided rollers made of hardened steel
- Cylindrical main rollers: steel with ball bearings hardened or with polyurethane rollers
- Anti-lift rollers made of hardened steel with ball bearings

Ordering Example Program 0320

Example:

Trolley selection for a flat cable package size of 110 mm width x 45 mm height set for a S6x12.5 I-Beam with flanged rollers.

Selection:

Cable support diameter $d_a = 125$ mm,
according to minimum bend diameter of cable.
 $b_2 = 130$ mm
 $s = 60$ mm (as per table on page 11)

Part No.:

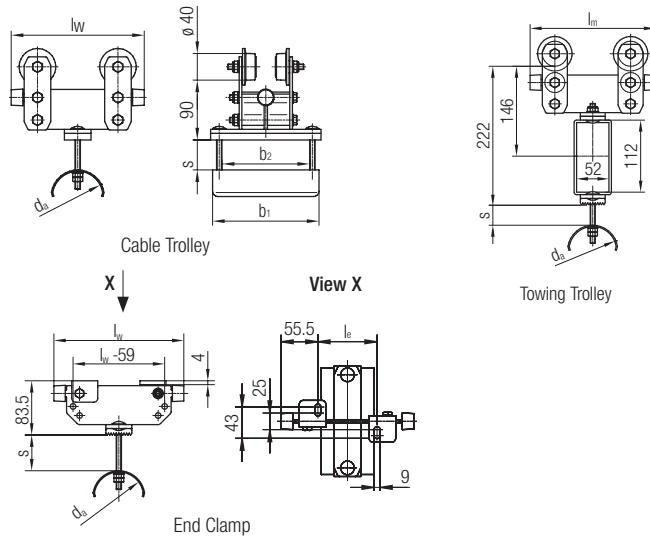
Cable Trolley without Anti-Lift Rollers	
032252-250x160/30-DE	
Base Trolley	_____
Running Gear Designation	_____
Beam Suffix	_____

Corresponding Tow Trolley with Anti-Lift Rollers
032262-250x160/31-DE

Corresponding End Clamp
032242-250x160

Cable Trolleys Program 0320

Steel Trolleys for Flat Cables



- Max. Load Capacity 80 kg¹⁾
- Max. Travel Speed 100 m/min¹⁾
- Other Trolley Sizes available upon request

1) depending on roller size and roller material

Cable Trolley Part No.	End Clamp Part No.	Towing Trolley Part No.	d _a [mm]	l _w [mm]	b ₁ [mm]	b ₂ [mm]	s [mm]	l _e [mm]	l _m [mm]			
032250-160x100/...	032240-160x100	032260-200x100/...	80	160	100	70	35	49	200			
032250-160x160/...	032240-160x160	032260-200x160/...			160	130						
032250-200x100/...	032240-200x100	032260-200x100/...			100	70	55			89		
032250-200x160/...	032240-200x160	032260-200x160/...									160	130
032252-200x100/...	032242-200x100	032262-200x100/...	125	200	100	70	35	89	200			
032252-200x160/...	032242-200x160	032262-200x160/...			160	130						
032252-250x100/...	032242-250x100	032262-250x100/...			100	70	60			139	250	
032252-250x160/...	032242-250x160	032262-250x160/...										160
032252-250x200/...	032242-250x200	032262-250x200/...	160	250	200	170	40	139	250			
032253-250x160/...	032243-250x160	032263-250x160/...			175	130				55	169	280
032253-250x200/...	032243-250x200	032263-250x200/...										
032253-280x160/...	032243-280x160	032263-280x160/...			175	130				215	170	
032253-280x200/...	032243-280x200	032263-280x200/...	215	170								

Running Gear with $\phi 40/55$ mm Flanged Rollers (for parallel and tapered flange I-Beams)	
Without Anti-Lift Rollers	
Running Gear Designation with Hardened Steel Rollers .../30-...	
With Anti-Lift Rollers	
Running Gear Designation with Hardened Steel Rollers .../31-...	

Running Gear with $\phi 40$ mm Cylindrical Main Rollers (for tapered flange I-Beams only)	
Without Anti-Lift Rollers	
Running Gear Designation with Hardened Steel Rollers .../10-... with Polyurethane Rollers .../12-...	
With Anti-Lift Rollers	
Running Gear Designation with Hardened Steel Rollers .../11-... with Polyurethane Rollers .../13-...	

Beam Suffix	Beam Size	Nominal Flange Width	
		[Inch]	[mm]
AA	S3x5.7	2.33	059
BB	S4x7.7	2.66	068
CC	S5x10.0	3.00	076
DE	S6x12.5	3.33	085
NF	S8x18.4	4.00	102
ED	W4x13.0	3.94	100
FD	W6x8.5	3.94	100
GD	W6x12.0	4.00	102
HD	W8x10.0	3.94	100
ID	W8x13.0	4.00	102
JD	W8x15.0	4.02	102
KD	W10x11.5	3.95	100
LD	W10x15.0	4.00	102
MD	W10x17.0	4.01	102

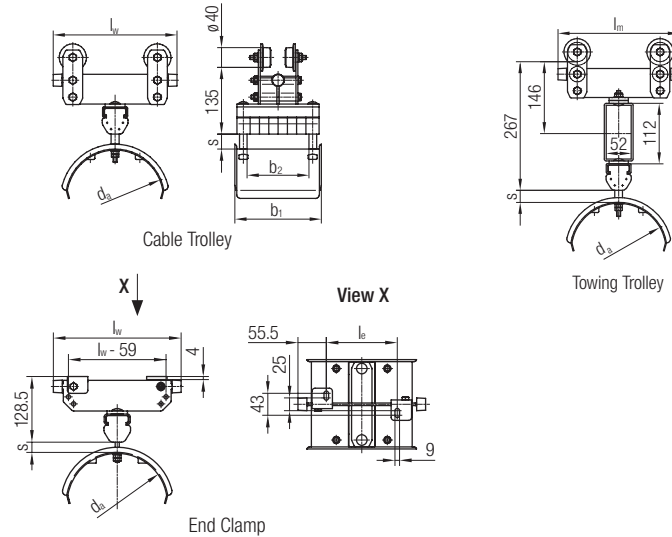
Cable Trolleys Program 0320

Steel Trolleys for Round Cables



- Max. Load Capacity 80 kg¹⁾
- Max. Travel Speed 100 m/min¹⁾
- Other Trolley Sizes available upon request

¹⁾ depending on roller size and roller material



Cable Trolley Part No.	End Clamp Part No.	Towing Trolley Part No.	d _a [mm]	l _w [mm]	b ₁ [mm]	b ₂ [mm]	s [mm]	l _e [mm]	l _m [mm]
032464-250x160/...	032494-250x160	032474-250x160/...	200	250	175	125	20	139	250
032464-250x200/...	032494-250x200	032474-250x200/...			215	165			
032465-320x160/...	032495-320x160	032475-320x160/...	250	320	175	125	25	209	320
032465-320x200/...	032495-320x200	032475-320x200/...			215	165			
032465-320x250/...	032495-320x250	032475-320x250/...			265	215			
032467-400x160/...	032497-400x160	032477-400x160/...	320	400	175	125	32	289	400
032467-400x200/...	032497-400x200	032477-400x200/...			215	165			
032467-400x250/...	032497-400x250	032477-400x250/...			265	215			

For tow trolleys, running gears with anti-lift rollers are recommended. Running gears for other beam styles are available on request. Please contact us.

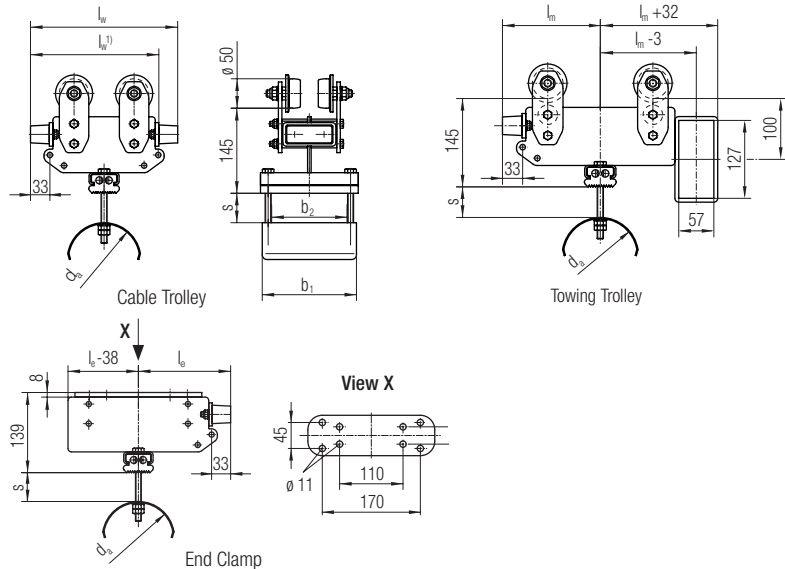
Running Gear with ø40/55mm Flanged Rollers (for parallel and tapered flange I-Beams)	
Without Anti-Lift Rollers	
Running Gear Designation with Hardened Steel Rollers .../30-...	
With Anti-Lift Rollers	
Running Gear Designation with Hardened Steel Rollers .../31-...	

Running Gear with ø40mm Cylindrical Main Rollers (for tapered flange I-Beams only)	
Without Anti-Lift Rollers	
Running Gear Designation with Hardened Steel Rollers .../10-... with Polyurethane Rollers .../12-...	
With Anti-Lift Rollers	
Running Gear Designation with Hardened Steel Rollers .../11-... with Polyurethane Rollers .../13-...	

Beam Suffix	Beam Size	Nominal Flange Width	
		[Inch]	[mm]
AA	S3x5.7	2.33	59
BB	S4x7.7	2.66	68
CC	S5x10.0	3.00	76
DE	S6x12.5	3.33	85
NF	S8x18.4	4.00	102
ED	W4x13.0	3.94	100
FD	W6x8.5	3.94	100
GD	W6x12.0	4.00	102
HD	W8x10.0	3.94	100
ID	W8x13.0	4.00	102
JD	W8x15.0	4.02	102
KD	W10x11.5	3.95	100
LD	W10x15.0	4.00	102
MD	W10x17.0	4.01	102

Cable Trolleys Program 0325

Steel Trolleys for Flat Cables



- Max. Load Capacity 125 kg¹⁾
- Max. Travel Speed 120 m/min¹⁾
- Other Trolley Sizes available upon request

1) depending on roller size and roller material

Cable Trolley Part No.	End Clamp Part No.	Towing Trolley Part No.	d _a [mm]	l _w [mm]	b ₁ [mm]	b ₂ [mm]	s [mm]	l _e [mm]	l _m [mm]	
032652-220x160/...	032642-320x160	032662-320x160/...	125	220 ¹⁾	160	128	35	160	160	
032652-220x200/...	032642-320x200	032662-320x200/...			200	168				
032652-250x160/...	032642-320x160	032662-320x160/...			250	160				128
032652-250x200/...	032642-320x200	032662-320x200/...				200				168
032653-290x160/...	032643-320x160	032663-320x160/...	160	290 ¹⁾	175	128	50			
032653-290x200/...	032643-320x200	032663-320x200/...			215	168				
032653-290x250/...	032643-320x250	032663-320x250/...			265	218				
032653-320x160/...	032643-320x160	032663-320x160/...			320	175	128			70
032653-320x200/...	032643-320x200	032663-320x200/...				215	168			
032653-320x250/...	032643-320x250	032663-320x250/...				265	218			
032654-320x160/...	032644-320x160	032664-320x160/...	200	320	175	128	50			
032654-320x200/...	032644-320x200	032664-320x200/...			215	168				
032654-320x250/...	032644-320x250	032664-320x250/...			265	218				

1) Trolley with one buffer only

Running Gear with ø 50/63 mm Flanged Rollers (for parallel and tapered flange I-Beams)	
Without Anti-Lift Rollers	
Running Gear Designation with Hardened Steel Rollers .../70-...	
With Anti-Lift Rollers	
Running Gear Designation with Hardened Steel Rollers .../71-...	

Running Gear with ø 50 mm Cylindrical Main Rollers (for tapered flange I-Beams only)	
Without Anti-Lift Rollers	
Running Gear Designation with Hardened Steel Rollers .../50-... with Polyurethane Rollers .../60-...	
With Anti-Lift Rollers	
Running Gear Designation with Hardened Steel Rollers .../51-... with Polyurethane Rollers .../61-...	

Beam Suffix	Beam Size	Nominal Flange Width	
		[Inch]	[mm]
AA	S3x5.7	2.33	59
BB	S4x7.7	2.66	68
CC	S5x10.0	3.00	76
DE	S6x12.5	3.33	85
NF	S8x18.4	4.00	102
ED	W4x13.0	3.94	100
FD	W6x8.5	3.94	100
GD	W6x12.0	4.00	102
HD	W8x10.0	3.94	100
ID	W8x13.0	4.00	102
JD	W8x15.0	4.02	102
KD	W10x11.5	3.95	100
LD	W10x15.0	4.00	102
MD	W10x17.0	4.01	102

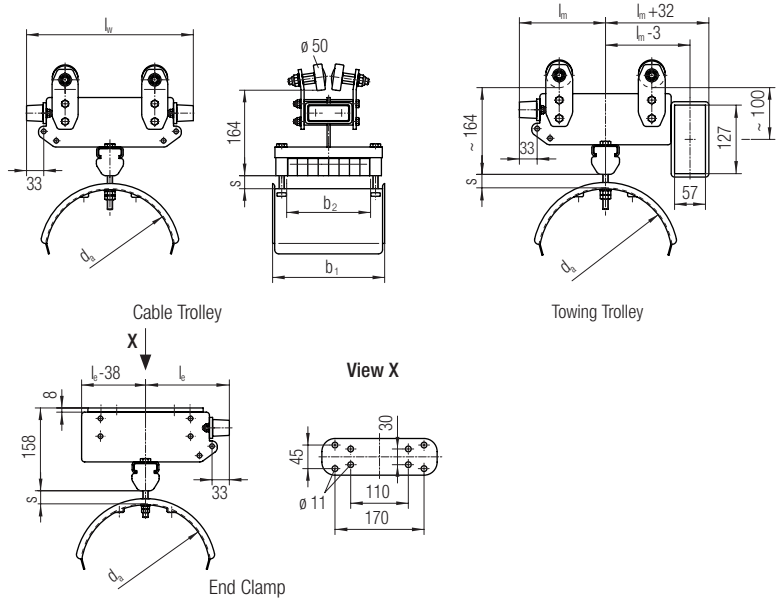
Cable Trolleys Program 0325

Steel Trolleys for Round Cables



- Max. Load Capacity 125 kg¹⁾
- Max. Travel Speed 120 m/min¹⁾
- Other Trolley Sizes available upon request

¹⁾ depending on roller size and roller material



Cable Trolley Part No.	End Clamp Part No.	Towing Trolley Part No.	d _a [mm]	l _w [mm]	b ₁ [mm]	b ₂ [mm]	s [mm]	l _e [mm]	l _m [mm]
032865-320x160/...	032895-320x160	032875-320x160/...	250	320	175	121	25	160	160
032865-320x200/...	032895-320x200	032875-320x200/...			215	161			
032865-320x250/...	032895-320x250	032875-320x250/...			265	211			
032867-400x160/...	032897-400x160	032877-400x160/...	320	400	175	121	32	200	200
032867-400x200/...	032897-400x200	032877-400x200/...			215	161			
032867-400x250/...	032897-400x250	032877-400x250/...			265	211			

For tow trolleys, running gears with anti-lift rollers are recommended. Running gears for other beam styles are available on request. Please contact us.

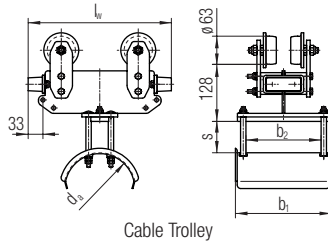
Running Gear with ø50/63 mm Flanged Rollers (for parallel and tapered flange I-Beams)	
Without Anti-Lift Rollers	
Running Gear Designation with Hardened Steel Rollers .../70-...	
With Anti-Lift Rollers	
Running Gear Designation with Hardened Steel Rollers .../71-...	

Running Gear with ø50 mm Cylindrical Main Rollers (for tapered flange I-Beams only)	
Without Anti-Lift Rollers	
Running Gear Designation with Hardened Steel Rollers .../50-... with Polyurethane Rollers .../60-...	
With Anti-Lift Rollers	
Running Gear Designation with Hardened Steel Rollers .../51-... with Polyurethane Rollers .../61-...	

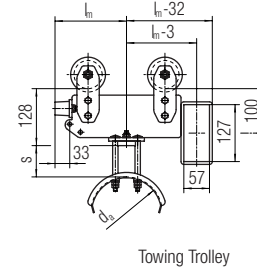
Beam Suffix	Beam Size	Nominal Flange Width	
		[Inch]	[mm]
AA	S3x5.7	2.33	59
BB	S4x7.7	2.66	68
CC	S5x10.0	3.00	76
DE	S6x12.5	3.33	85
NF	S8x18.4	4.00	102
ED	W4x13.0	3.94	100
FD	W6x8.5	3.94	100
GD	W6x12.0	4.00	102
HD	W8x10.0	3.94	100
ID	W8x13.0	4.00	102
JD	W8x15.0	4.02	102
KD	W10x11.5	3.95	100
LD	W10x15.0	4.00	102
MD	W10x17.0	4.01	102

Cable Trolleys Program 0330

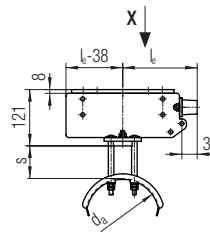
Steel Trolleys for Flat Cables



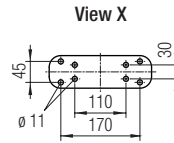
Cable Trolley



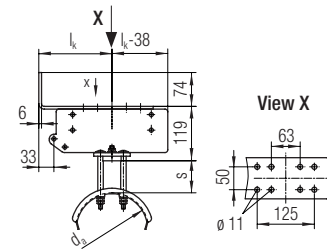
Towing Trolley



End Clamp



View X



Towing Clamp

- Max. Load Capacity 200 kg¹⁾
- Max. Travel Speed 150 m/min¹⁾
- Other Trolley Sizes available upon request

1) depending on roller size and roller material

Cable Trolley Part No.	End Clamp Part No.	Towing Trolley Part No.	Towing Clamp Part No.	d _a [mm]	l _w [mm]	b ₁ [mm]	b ₂ [mm]	s [mm]	l _e [mm]	l _m [mm]	l _k [mm]
033252-250x160/...	033242-320x160	033262-320x160/...	033272-320x160	125	250	175	128	50	160	160	160
033252-250x200/...	033242-320x200	033262-320x200/...	033272-320x200			215	168				
033252-250x250/...	033242-320x250	033262-320x250/...	033272-320x250			265	218				
033252-320x160/...	033242-320x160	033262-320x160/...	033272-320x160		320	175	128	85			
033252-320x200/...	033242-320x200	033262-320x200/...	033272-320x200			215	168				
033252-320x250/...	033242-320x250	033262-320x250/...	033272-320x250			265	218				
033253-320x160/...	033243-320x160	033263-320x160/...	033273-320x160	160	320	175	128	70	160	160	160
033253-320x200/...	033243-320x200	033263-320x200/...	033273-320x200			215	168				
033253-320x250/...	033243-320x250	033263-320x250/...	033273-320x250			265	218				
033254-400x160/...	033244-400x160	033264-400x160/...	033274-400x160	200	400	175	128	85	200	200	200
033254-400x200/...	033244-400x200	033264-400x200/...	033274-400x200			215	168				
033254-400x250/...	033244-400x250	033264-400x250/...	033274-400x250			265	218				

Running Gear with ø63/80 mm Flanged Rollers (for parallel and tapered flange I-Beams)	
Without Anti-Lift Rollers	
Running Gear Designation with Hardened Steel Rollers .../90-...	
With Anti-Lift Rollers	
Running Gear Designation with Hardened Steel Rollers .../91-...	

Running Gear with ø63 mm Cylindrical Main Rollers (for tapered flange I-Beams only)	
Without Anti-Lift Rollers	
Running Gear Designation with Hardened Steel Rollers .../80-... with Polyurethane Rollers .../82-...	
With Anti-Lift Rollers	
Running Gear Designation with Hardened Steel Rollers .../81-... with Polyurethane Rollers .../83-...	

Beam Suffix	Beam Size	Nominal Flange Width	
		[Inch]	[mm]
BB	S4x7.7	2.66	68
CC	S5x10.0	3.00	76
DE	S6x12.5	3.33	85
NF	S8x18.4	4.00	102
ED	W4x13.0	3.94	100
FD	W6x8.5	3.94	100
GD	W6x12.0	4.00	102
HD	W8x10.0	3.94	100
ID	W8x13.0	4.00	102
JD	W8x15.0	4.02	102
KD	W10x11.5	3.95	100
LD	W10x15.0	4.00	102
MD	W10x17.0	4.01	102

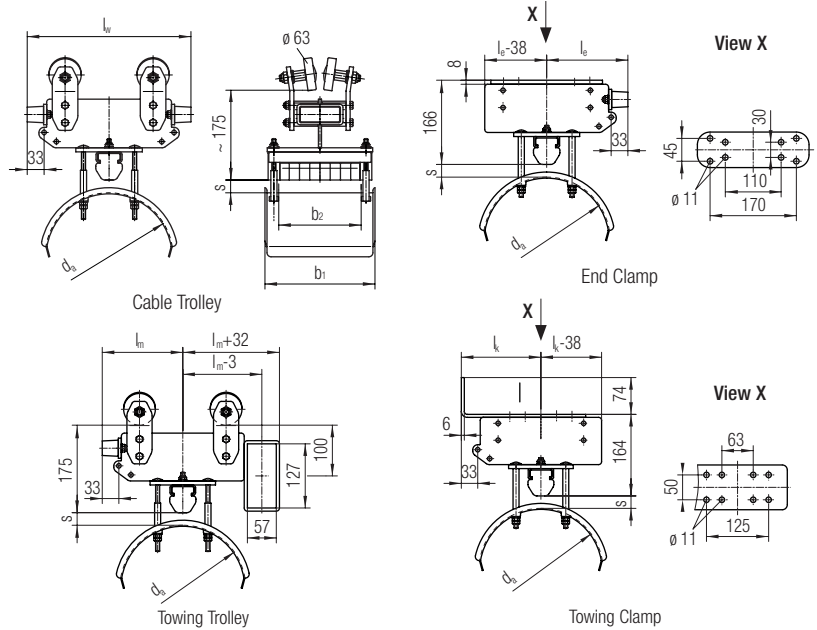
Cable Trolleys Program 0330

Steel Trolleys for Round Cables



- Max. Load Capacity 200 kg¹⁾
- Max. Travel Speed 150 m/min¹⁾
- Other Trolley Sizes available upon request

1) depending on roller size and roller material



Cable Trolley Part No.	End Clamp Part No.	Towing Trolley Part No.	Towing Clamp Part No.	d_a [mm]	l_w [mm]	b_1 [mm]	b_2 [mm]	s [mm]	l_e [mm]	l_m [mm]	l_k [mm]
033465-320x160/...	033495-320x160	033475-320x160/...	033485-320x160	250	320	175	121	25	160	160	160
033465-320x200/...	033495-320x200	033475-320x200/...	033485-320x200			215	161				
033465-320x250/...	033495-320x250	033475-320x250/...	033485-320x250			265	211				
033467-400x160/...	033497-400x160	033477-400x160/...	033487-400x160	320	400	175	121	32	200	200	200
033467-400x200/...	033497-400x200	033477-400x200/...	033487-400x200			215	161				
033467-400x250/...	033497-400x250	033477-400x250/...	033487-400x250			265	211				

For tow trolleys, running gears with anti-lift rollers are recommended. Running gears for other beam styles are available on request. Please contact us.

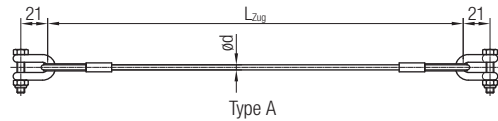
Running Gear with $\phi 63/80$ mm Flanged Rollers (for parallel and tapered flange I-Beams)	
Without Anti-Lift Rollers	
Running Gear Designation with Hardened Steel Rollers .../90-...	
With Anti-Lift Rollers	
Running Gear Designation with Hardened Steel Rollers .../91-...	

Running Gear with $\phi 63$ mm Cylindrical Main Rollers (for tapered flange I-Beams only)	
Without Anti-Lift Rollers	
Running Gear Designation with Hardened Steel Rollers .../80-... with Polyurethane Rollers .../82-...	
With Anti-Lift Rollers	
Running Gear Designation with Hardened Steel Rollers .../81-... with Polyurethane Rollers .../83-...	

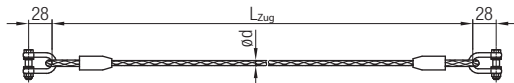
Beam Suffix	Beam Size	Nominal Flange Width [Inch] [mm]	
BB	S4x7.7	2.66	68
CC	S5x10.0	3.00	76
DE	S6x12.5	3.33	85
NF	S8x18.4	4.00	102
ED	W4x13.0	3.94	100
FD	W6x8.5	3.94	100
GD	W6x12.0	4.00	102
HD	W8x10.0	3.94	100
ID	W8x13.0	4.00	102
JD	W8x15.0	4.02	102
KD	W10x11.5	3.95	100
LD	W10x15.0	4.00	102
MD	W10x17.0	4.01	102

Accessories for Festoon Systems Program 0320, 0325 and 0330

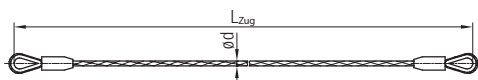
Tow Ropes



Type A



Type B

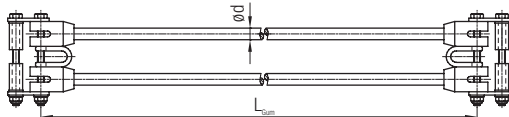


Type C

Type C suggested for use with Damping Rope assembly.
Different types and lengths available upon request.

Part No.	ød [mm]	Material Rope	Type	Program
020328-04	4	Galvanized Steel	A	0320
020329-04	4	Galvanized Steel (w/PVC Jacket)		
020328-06	6	Galvanized Steel	B	0325, 0330
020329-08	8	Galvanized Steel (w/PVC Jacket)		
020325-08	8	Galvanized Steel (w/PVC Jacket)	C	

Damping Devices



Note:

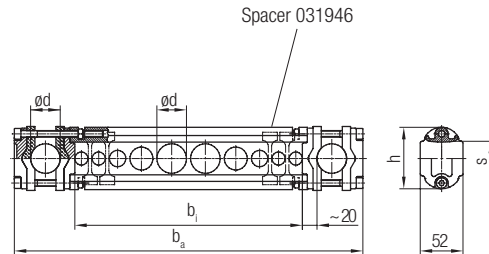
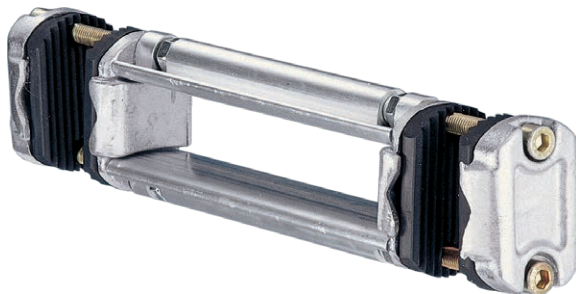
In case of order please state the lengths L_{Gum} of the respective Damping Ropes.

Different types and lengths available upon request.

Part No.	ød [mm]	Material Rope	Program
020337-10	10	Rubber core with a Nylon jacket	0325, 0330
020337-14	14		

Accessories for Festoon Systems Program 0320, 0325 and 0330

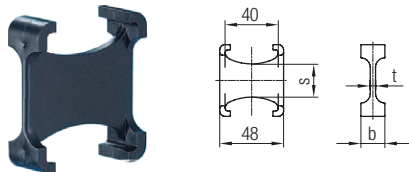
Round Cable Clamps



Part No.	$\varnothing d_{max}$ [mm]	b_1 [mm]	b_a [mm]	h [mm]	s [mm]	$\Sigma d^{1)}$ [mm]	Support Rail	Material Cable Clip	Fasteners	Weight [kg]			
031941-026x100/400	26	100	236	64	30	34	Aluminum	Rubber	Stainless Steel	0.95			
031941-026x150/400		150	286							1.07			
031941-026x200/400		200	336							1.09			
031941-026x250/400		250	386							1.31			
031941-036x100/400	36	100	256	74	40	46				Aluminum	Rubber	Stainless Steel	1.04
031941-036x150/400		150	306										1.16
031941-036x200/400		200	356										1.28
031941-036x250/400		250	406										1.40

1) A cable spacer is required between cables if the sum of the diameters of two adjacent cables is smaller than the value Σd .

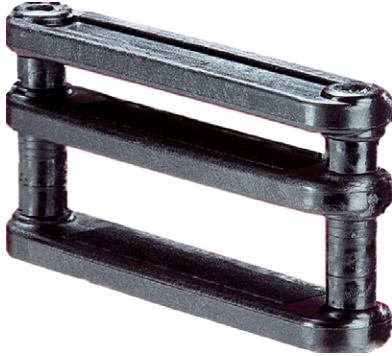
Spacers



Part No.	s [mm]	t [mm]	b [mm]	Material	Used with Round Cable Clamp
031946-26	25	4	18	Plastic	031941-026x...
031946-36	35	5	19		031941-036x...

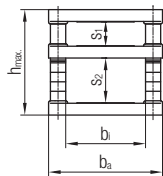
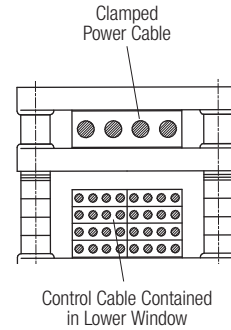
Accessories for Festoon Systems Program 0320, 0325 and 0330

Flat Cable Clamps

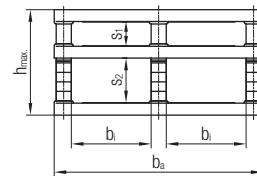


Power cables are clamped in upper window s_1 , control cables are contained in lower window s_2 with sufficient space ($> 2\text{ mm}$) to allow the cables to move freely.

Flat cable clamps are supplied pre-assembled with upper window s_1 of minimum size and lower window s_2 of maximum size. The cable clamps can be adjusted to fit cable packages by transferring spacers from window s_2 to window s_1 .



020126...
031953...

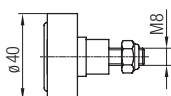
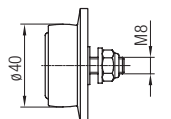


031955...

Part No.	b_1 [mm]	b_a [mm]	$s_1 + s_2$ [mm]		$s_{1min.}$ [mm]	$h_{max.}$ [mm]	Material		Weight [kg]
							Cable Clamps	Fasteners	
020126-054x018	54	90	18	+2.5	3	50	Galvanized Steel	0.07	
020126-054x028			28			60		0.08	
020126-054x038			38			70		0.09	
031953-084x025/400	84	120	25	+2.5	5	60	Plastic	0.16	
031953-084x035/400			35			70		0.17	
031953-084x045/400			45			80		0.18	
031953-084x055/400			55			90		0.19	
031953-084x065/400			65			100		0.21	
031953-136x025/400			25			60		0.22	
031953-136x035/400	136	172	35	+2.5	5	70	Stainless Steel	0.23	
031953-136x045/400			45			80		0.24	
031953-136x055/400			55			90		0.25	
031953-136x065/400			65			100		0.26	
031953-136x075/400			75			110		0.27	
031953-136x085/400			85			120		0.28	
031955-084x035/400	84	220	35	+2.5	5	70	Plastic	0.41	
031955-084x045/400			45			80		0.43	
031955-084x055/400			55			90		0.44	
031955-084x065/400			65			100		0.46	
031955-084x075/400			75			110		0.48	
031955-103x025/400			25			60		0.42	
031955-103x035/400	103	258	35	+2.5	5	70	Stainless Steel	0.43	
031955-103x045/400			45			80		0.46	
031955-103x055/400			55			90		0.47	
031955-103x065/400			65			100		0.49	
031955-103x075/400			75			110		0.51	

Wear Parts for Cable Trolleys Program 0320, 0325 and 0330

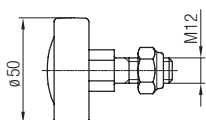
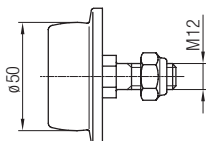
Replacement Rollers for Program 0320



\varnothing 40/55 mm Flanged Roller	Part No.	Type with	
	030101-040	Hardened Steel Roller	

\varnothing 40 mm Cylindrical Main Roller	Part No.	Type with	For Flange Widths
	030102-040.1	Hardened Steel Roller	42 - 58
	030102-040.2		61 - 84
	030103-040.1	Polyurethane Roller	42 - 58
	030103-040.2		61 - 84

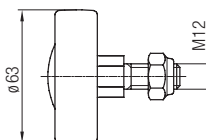
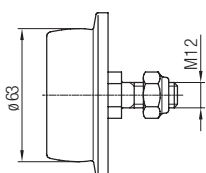
Replacement Rollers for Program 0325



\varnothing 50/63 mm Flanged Roller	Part No.	Type with	
	030101-050	Hardened Steel Roller	

\varnothing 50 mm Cylindrical Main Roller	Part No.	Type with	For Flange Widths
	030102-050.1	Hardened Steel Roller	50 - 58
	030102-050.2		61 - 84
	030113-050.1	Polyurethane Roller	50 - 58
	030113-050.3		61 - 84

Replacement Rollers for Program 0330



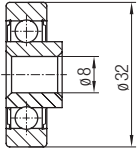
\varnothing 63/80 mm Flanged Roller	Part No.	Type with	
	030101-063	Hardened Steel Roller	

\varnothing 63 mm Cylindrical Main Roller	Part No.	Type with	For Flange Widths
	030102-063.1	Hardened Steel Roller	50 - 66
	030102-063.2		67 - 92
	030113-063.1	Polyurethane Roller	50 - 66
	030113-063.3		67 - 92

Wear Parts for Cable Trolleys

Program 0320, 0325 and 0330

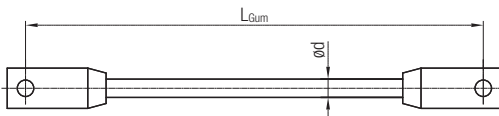
Replacement Anti-Lift Roller for Program 0320, 0325 and 0330



Part No.

02-K012-0062

Damping Ropes for Program 0325 and 0330



Technical details

- Damping Rope: rubber with plastic plait
- Fasteners: stainless steel/hot-dipped galvanized steel

Part No.	$\varnothing d$ [mm]	Weight [kg/m]
020336-10	10	0.09
020336-14	14	0.17

Note:

In case of order please state the lengths L_{Gum} of the respective Damping Ropes.

Service – tailor-made

Complete service competence

The scope and depth of the Conductix-Wampfler range of services is based on the requests and requirements of the customers. From planning to long-term agreements, anything is possible – according to your needs. Plus, the more complex the system layout and the expectations of operational life and operational safety, the more sense it makes to utilize our competent service team. Ask us!

Project planning

- Determining the application parameters
- Selecting the optimal cable trolley technology and suitable cables – optimized to customer requirements, application parameters and environmental factors

Pre-assembly

- Mounting the cable trolleys on the transport beam
- Laying out and aligning the cables
- Installing the equipment
- Loading and transporting the festoon system to its site of operation



Final assembly & inspection

- Ensuring the correct assembly on site
- Completing the installation, inspection, and commissioning using trained and experienced personnel

Maintenance & service

- Regular maintenance and inspections increase the operational life of the facility, ensuring its long-term availability
- Conductix-Wampfler service agreements: the “complete worry-free package”



The experts of Conductix-Wampfler assist our customers from planning through pre-assembly right up to the on-site installation – anywhere in the world!



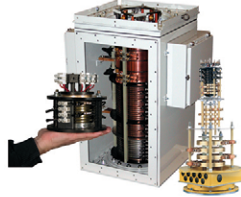
Other Products from Conductix-Wampfler

The products described in this catalog represent a few of the products from the broad spectrum of Conductix-Wampfler components and systems for the transfer of energy, data, gases, and fluids. The solutions we deliver for your applications are based on your specific requirements. In many cases, a combination of several different Conductix-Wampfler products are needed to fill the application. You can count on all of Conductix-Wampfler's business units for hands-on engineering support - coupled with the perfect solution to meet your energy management and control needs.



Motor driven cable reels

Motor driven reels by Conductix-Wampfler are the perfect solution for managing long lengths of heavy cable and hoses in very demanding industrial applications. Monospiral, level wind, and random wind spoils.



Slip ring assemblies

Whenever powered machinery needs to rotate 360°, field proven slip ring assemblies by Conductix-Wampfler can flawlessly transfer energy and data. Here, everything revolves around flexibility and reliability.



Conductor bar

Whether they are enclosed conductor rails, expandable single-pole bar systems, or high amperage bar for demanding steel mill use up to 6000 amps. Conductix-Wampfler's conductor bar is the proven solution to reliably move people and material.



Spring driven cable reels

We have 60 years experience and trusted brands such as Insul-8, Wampfler, and IER. We offer small cord reels all the way to large multi-motor units, a wide range of accessories, and hazardous location reels.



Cable Festoon systems

It's hard to imagine Conductix-Wampfler cable trolleys not being used in virtually every industrial application. They are reliable and robust and available in an enormous variety of sizes and models.



Push Button Pendants

Our ergonomic pendants are ideally suited for industrial control applications. They are available in a wide range of configurations for overhead cranes and other machinery.



Radio remote controls

Safe, secure, and reliable radios use the latest in microprocessor technology. Available in several models for overhead crane control and other types of machinery.



Inductive Power Transfer IPT®

The contact-less system for transferring energy and data. For all tasks that depend on high speeds and absolute resistance to wear.



Data Transfer: ProfiDAT® | Nexus

Safe & reliable wireless communication using slotted waveguide technology that's PROFIsafe compatible.

Nexus NB for narrow band signal transfer over power conductors



LJU Automation EMS Controller

Specialized controllers Programmable by parameters, Ideal for Electrified Monorails at automotive plants, with over 1500 in service worldwide. Adaptable for other applications



BridgeGuard™

Prevents crane to crane and crane to end collisions. IP69K rated for indoor and outdoor use, with a 3 ft to 150 ft range. Compliant with IEC 60068-2-6:2007



Air & Spring balancers | Air hoists

Conductix-Wampfler offers the full line of ENDO positioning devices. Rugged, reliable steel construction increasing safety and decreasing fatigue and body stress.

www.conductix.us

USA / LATIN AMERICA

10102 F Street
Omaha, NE 68127

Customer Support
Phone +1-800-521-4888

Phone +1-402-339-9300
Fax +1-402-339-9627

info.us@conductix.com
latinamerica@conductix.com

CANADA

1435 Norjohn Court
Unit 5
Burlington, ON L7L 0E6

Customer Support
Phone +1-800-667-2487

Phone +1-450-565-9900
Fax +1-450-951-8591

info.ca@conductix.com

MÉXICO

Calle Treviño 983-C
Zona Centro
Apodaca, NL México 66600

Customer Support
Phone (+52 81) 1090 9519
(+52 81) 1090 9025
(+52 81) 1090 9013

Fax (+52 81) 1090 9014

info.mx@conductix.com

BRAZIL

Rua Dois, 493
Itu, São Paulo, Brasil
CEP: 13312-820

Customer Support
Phone (+55 11) 4813 7330

Fax (+55 11) 4813 7330

info.br@conductix.com

Contact us for our Global Sales Offices

