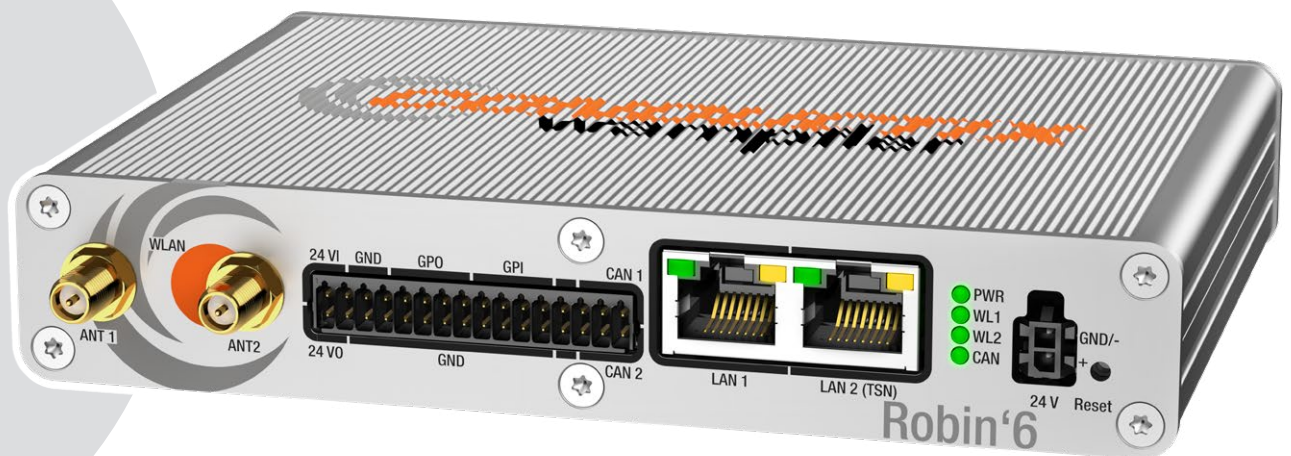


AGV/AMR Communication Device

Robin'6



CONDUCTIX
wampfler

Robin'6

Fully managed AGV/AMR Communication Device

Robin'6 sets new standards in terms of reliable communication combined with ultra-compact design.

With Robin'6 you are ready for the technology of the future in the world of AGVs, AMRs and Industrial Mobile Robots.

- Lowering integration cost – all in one connectivity, simplified wiring, faster set-up
- Lowering operating cost – Energy saving, remote serviceability, less down-time
- Enhanced Cyber Security
- Latest Wi-Fi 6 *) standard IEEE 802.11 ax replacing dated Wi-Fi 4/5 solutions

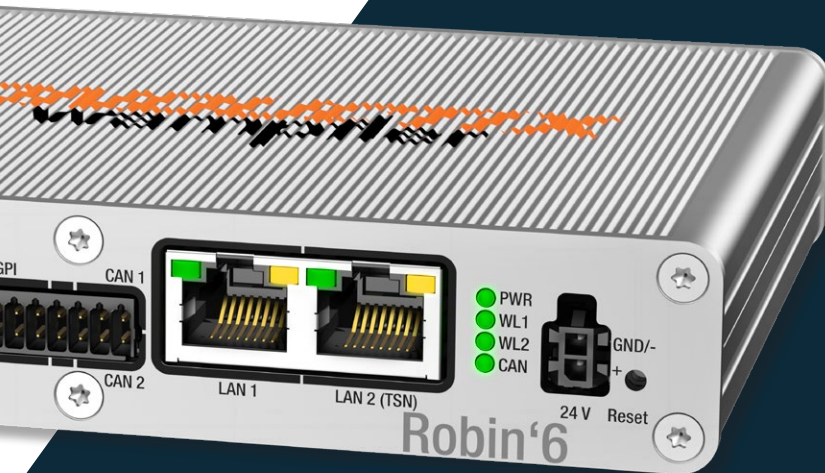


*) Wi-Fi 6 is a trade-mark of Wi-Fi Alliance, 10900-A Stonelake Boulevard, Suite 195, Austin, TX 78759 U.S.A.



Key Features

- Fully managed – configuration and monitoring
- Wireless and wired bring-up
- Power-saving sleep modes:
Wake up on time, wake up on event
- Power-saving status extension
- WLAN, LAN, CAN and GPIO connectivity
- Latest Wi-Fi 6 (IEEE 802.11ax) technology:
Client and μ Access-Point (μ AP) functionality
with up to 1.2 Gbit/s data transmission.



Technical Data

Interfaces

Ethernet	2x 10/100/1000 Mbit/s RJ45 socket
Power Supply	10 – 32 VDC, optional Power over Ethernet
GPIO	4 x IN, 4 x OUT 24 V capable with a max. current of 250 mA per output
CAN	2 x CAN *)
gNMI	Management interface optimized for telemetry
NETCONF	Management interface optimized for configurations

*) Hardware is complete, while the software enhanced functionality will be available through future software releases that may require a dedicated license.

Basic Configuration and Networking

Wireless-Bring-Up	μAP, static client IP
Wired-Bring-Up	LAN 1 LAN 2, static client IP
STP (IEEE 802.1D)	Yes
LLDP	Yes
VLAN (IEEE 802.1Q)	Yes
Numbers of VLAN/maximum	24 on LAN 1, 7 on (TSN) LAN 2
IPv4 Configuration (static/DHCP)	Yes
NTP client	Yes
Configuration: Local Web Interface	Yes
Configuration: Import/Export	Yes

Power Requirements

Operating Voltage	24 VDC (10-32 VDC), according to ISO 16750-2 E
Power Consumption	Maximum power consumption: 10 W
Sleep Current	< 40 mA

General Information

We reserve the right to make changes to the product at any time in the course of technical progress without prior notice. All our devices are CE-compliant. Our general terms and conditions apply. We will be happy to send you these on request. Reprinting, even in extracts, is only permitted with our approval.

Technical Data

Mechanical Construction

Dimensions	27 × 105 × 148 mm
Mounting	Mounting Brackets, DIN rail mounting
Weight	510 g
Protection Class	IP 30

Ambient Conditions

Operating Temperature	-25 °C – +65 °C
Storage/Transport Temperature	-40 °C – +85 °C
Relative Humidity	10% – 90%

Radio Technology

Dual Radio Support	1 Wi-Fi 6 and 1 Wi-Fi 4/5
Frequency Band	Supports 2.4 GHz or 5 GHz: 2412-2472 MHz or 5180-5825 MHz Regulatory restrictions apply depending on the country of operation
Modulation	OFDM: BPSK, QPSK, DBPSK, DQPSK, 16-QAM, 64-QAM, 256-QAM, 1024-QAM
Channel Widths	20 MHz, 40 MHz and 80 MHz
Encryption	WPA2-PSK, WPA3-PSK, Enhanced Open (OWE)
Access Point Functionality	Yes. Micro Access Point (μAP) functionality targeted at AGV/AMR application scenarios. Maximum of 16 clients
Client/Station Functionality	Yes
Output Power	Wi-Fi IEEE 802.11b: 19 dBm Wi-Fi IEEE 802.11a/g: 17 dBm Wi-Fi IEEE 802.11n/ac/ax: 14-16 dBm
Radio	UL MU OFDMA, BSS coloring, 2x2 MIMO (configurable)

Roaming Support

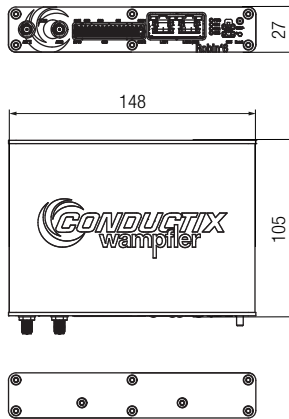
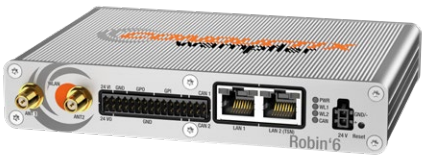
Standard Roaming	Open System, OWE, WPA2-PSK, WPA3-SAE
Fast Transition Roaming	FT-PSK (Fast Transition / IEEE 802.11r WPA2) , FT-SAE (Fast Transition WPA3)

Approvals

Basis Standard	CE, FCC and Canada
Safety of Industrial Control Equipment	EN IEC 62368-1 + A11, EN IEC 62311
Radio	ETSI EN 300 328:2019 V2.2.2 (2.4GHz), ETSI EN 301 893:2017 V2.1.1 (5GHz)
Shock and Vibration	IEC 60068-2-27, IEC 60068-2-6

Order Information

Robin'6



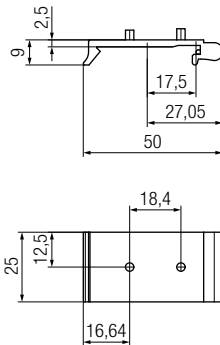
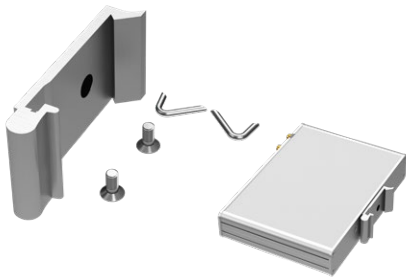
Robin'6

+ Power Supply Pigtail (World or USA)

Order-No. World: 3301711

Order-No. USA: 3308528

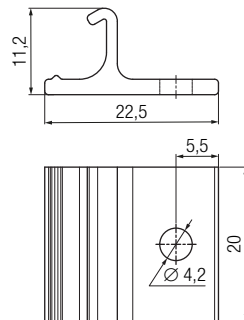
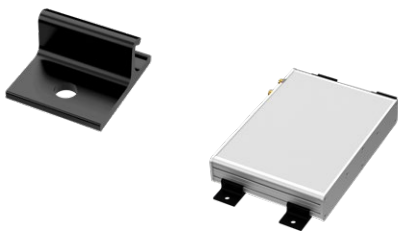
Mounting Kits – DIN-Bracket



DIN Mounting Bracket 7.5 x 35 for Robin'6

Order-No.: 3305761

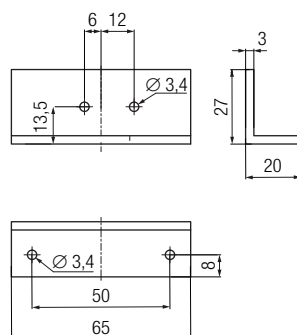
Mounting Kits – Snap-In C-Bracket



C Mounting Bracket, use up to four per Robin'6 device

Order-No.: 3307984

Mounting Kits – L-Bracket

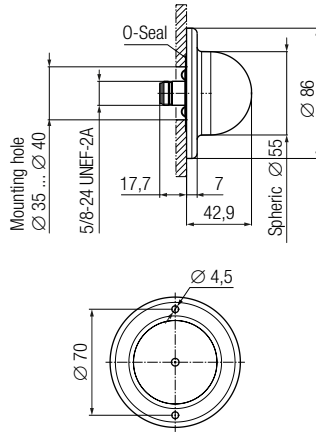


L Mounting Bracket for Robin'6

Order-No.: 3307983

Order Information

Dome Antenna 43 mm



Dome Antenna 8 dBi, 43 mm

Wi-Fi Dual-band Omni-S, 2.4 / 5 GHz, 6 / 8 dBi, Indoor, vertical polarized, connector N (f)

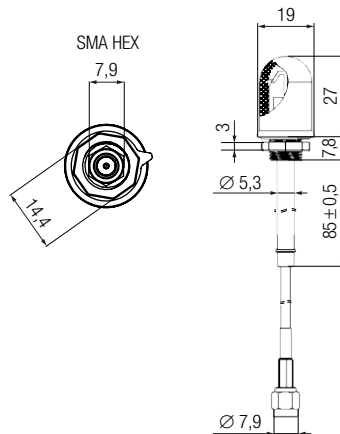
Order-No.: 3308373

N- to RP-SMA Cable

Antenna cable connector N and connector RP-SMA, 0,45 m

Order-No.: 3308374

Dome Antenna 27 mm



Dome Antenna 6 dBi, 27 mm

2.4 GHz Antenna - 2.4 GHz, 5 GHz, SMA (m)

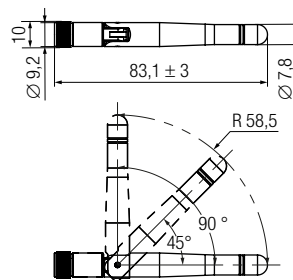
Order-No.: 3308375

SMA Adapter

Adapter SMA to RP-SMA

Order-No.: 3308376

Pole Antenna

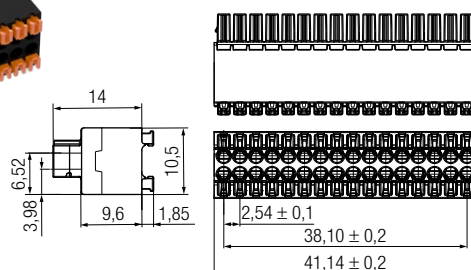
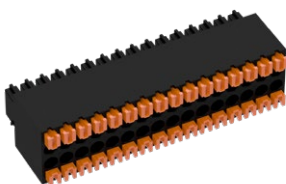


Pole Antenna 114 mm 2 dBi

2,4 GHz, 5,5 GHz whip, inclined HF antenna
2,4 GHz up to 2,5 GHz, 4,91 GHz up to 5,85 GHz
2 dBi RP-SMA-plug – IP67

Order-No.: 3308372

I/O and CAN Connector



Robin'6 Connector

Robin'6 push-in spring connector for I/O and CAN ports

Order-No.: 3308377

www.conductix.com

Conductix-Wampfler

has just one critical mission:

To provide you with energy and data transmission systems that will keep your operations up and running 24/7/365.

To contact your nearest sales office, please refer to:

www.conductix.contact

