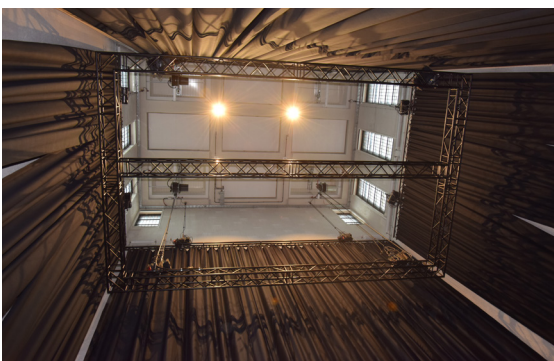
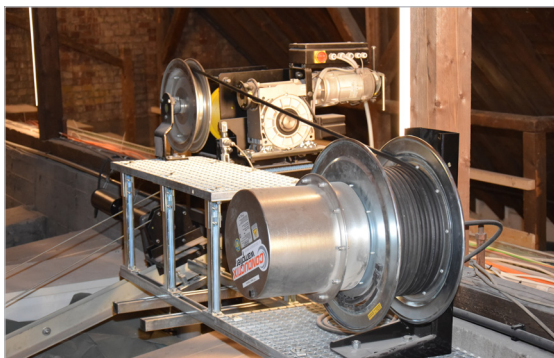


# Reference

Theater, Stage & Lighting

## Spring Cable Reel



### Application

Supply of light trusses, audio, loudspeakers

### Country | City | Representation

Germany | Gelsenkirchen | Conductix-Wampfler GmbH

### Operator

Hl. Kreuz Kirche Gelsenkirchen – Emschertainment.de

### Customer

Lange & Ohlemeier Veranstaltungstechnik

### Project installation date

06/2020

### Technical requirements

Lighting and audio truss supply | 18 m stroke

### Traversing speed [consumers]

30 m/min

### Max. acceleration

1,67 m/s<sup>2</sup>

### Products

3 x SR SR50.3PA.13GB090+2(2UC) + SE - PT=6 with 33 m hybrid cable 17G4+2x(2x1) - Energy + DMX

3 x SR SR40.2PA.5GD090+1Z030+SE-PT=6 with 30 m (1x28m) hybrid cable 5G6+(4x2xAWG26)CAT6 - Energy + Ethernet CAT6

2 x SR SR40.2PA.5BG060+SE PT=5 with 32 m cable 5G4 – audio/sound

2 x SR SR30.2PA.9GB050+SE PT=4 with 23 m cable 12G2,5 mm<sup>2</sup> – loudspeaker 8pol

### Additional product description

Combined solution for 6 circuits 230 V / 16 A or 23 A as well as DMX and Ethernet CAT6 up to 1 Gb/s 250 Mhz data transmission as well as audio/sound and loudspeaker supply

### Drive

Spring motor

### Cables

reelable hybrid cable 17G4+2(2x1)C, 5G6+(4x2xAWG26)CAT6, as well as 5G4, 12G2,5

### Feed connector

Vertical stroke with cable guide

### Current

230 V 16 A resp. 23 A circuits

### Voltage

300/500V